



## Omega-We-Sdc

Helix Woltmann type water meter  
interchangeable mechanism-dry dial



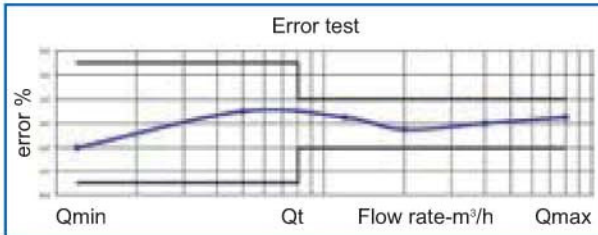
**WaterTech**

## Helix Woltmann type water meter interchangeable mechanism-dry dial

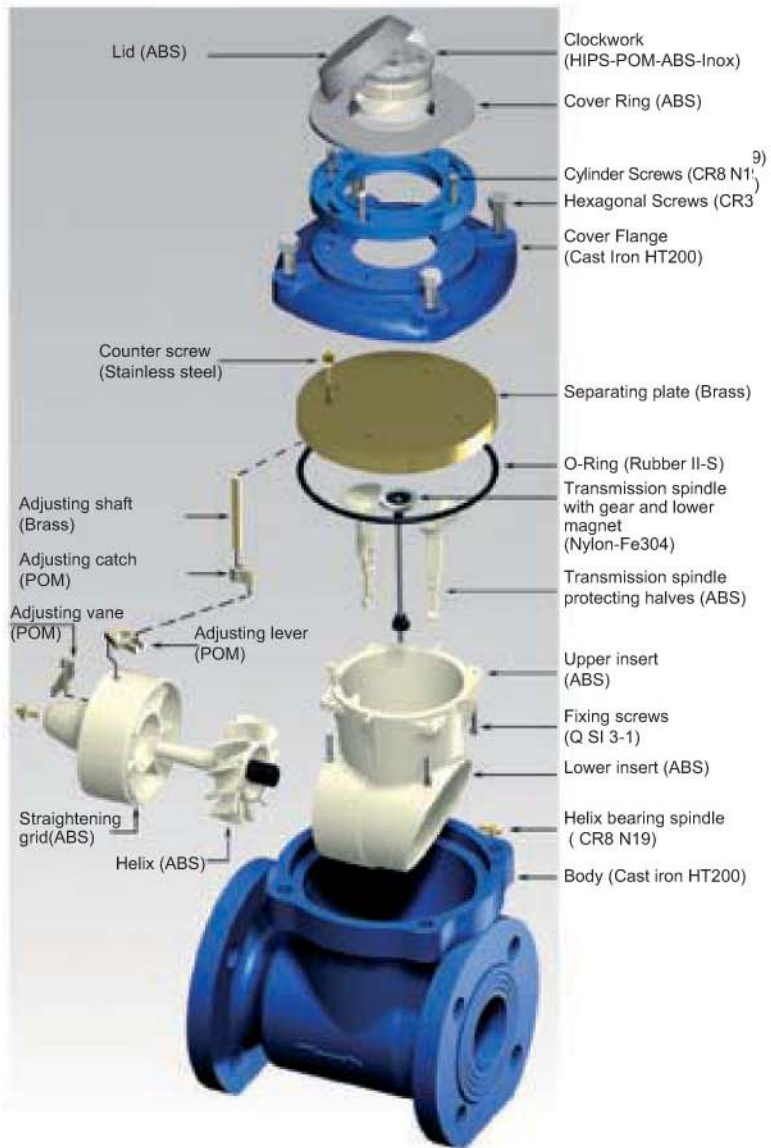
A full bore, helix Woltmann type meter suitable for cold water. The impeller rotates on stainless steel spindles mounted in the measuring chamber. The impeller is made of self-cleaning synthetic resin.

The helix aligns with the pipe axis. The complete metering unit is easily removable from the meter body. The meter is designed to ensure high flow-rate with minimum head-loss. Omega-We-Sdc is a super-dry dial type meter with 360° rotating clockwork. The gears and the totalizer operate in a dry Copper-Can\* compartment, only the helix is submerged in water. Transmission is achieved through a corrosion-proof permanent magnetic drive which is protected by the cast iron meter body from external magnetic fields. A version for warm water up 90° C is available. The water meter OMEGA WE SDC in pre-equipped for application of pulse emitter reed switch type.

Approved EEC 75/33 Class B.



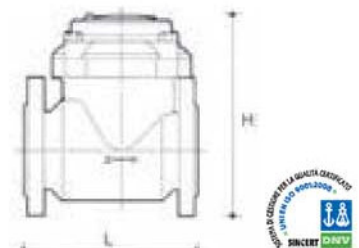
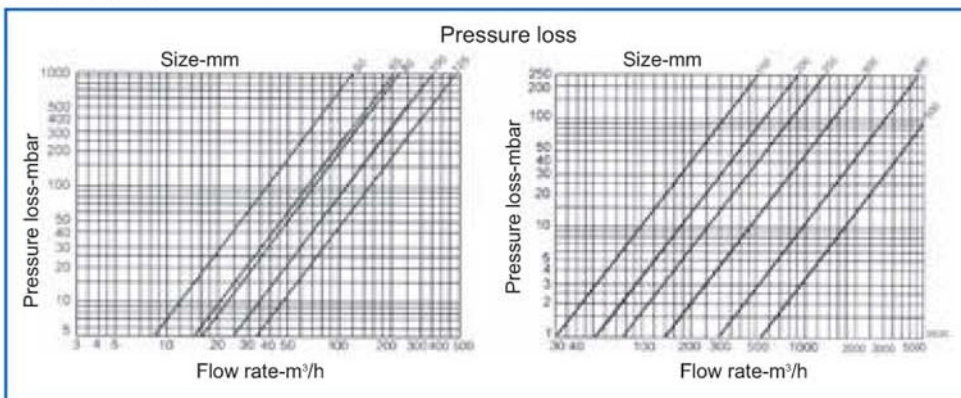
\* Copper-Can. Clockwork contained in a closed copper box with a mineral glass cover. IP68 tightness and perfect clear reading is guaranteed



### TECHNICAL DATA AND DIMENSIONS (Class B)

GAUGE	mm	50	65	80	100	125	150	200	250	300	400	500
	inches	2"	2.1/2"	3"	4"	5"	6"	8"	10"	12"	16"	20"
<b>Qmax</b>	m <sup>3</sup> /h	30	50	80	120	120	300	500	800	1200	2000	3000
<b>Qn</b>	m <sup>3</sup> /h	15	25	40	60	60	150	250	400	600	1000	1500
<b>Qt</b>	m <sup>3</sup> /h	3	5	8	12	12	30	50	80	120	200	300
<b>Qmin</b>	m <sup>3</sup> /h	0,45	0,75	1,2	1,8	1,8	4,5	7,5	12	18	30	45
<b>PN*</b>	bar	16	16	16	16	16	16	16	16	16	16	16
<b>Pressure loss (at Qmax)</b>	bar	<0,2	<0,2	<0,2	<0,2	<0,2	<0,2	<0,2	<0,2	<0,2	<0,2	<0,2
<b>Minimum reading</b>	lt	1	1	1	1	1	10	10	10	10	10	10
<b>Maximum reading</b>	m <sup>3</sup>	10 <sup>6</sup>	10 <sup>6</sup>	10 <sup>6</sup>	10 <sup>6</sup>	10 <sup>6</sup>	10 <sup>7</sup>	10 <sup>7</sup>	10 <sup>8</sup>	10 <sup>8</sup>	10 <sup>8</sup>	10 <sup>8</sup>
<b>Weight</b>	Kg	11,00	13,00	14,50	17,50	22,00	44,00	53,00	105,00	115,00	190,00	280,00
<b>Length (L)</b>	mm	200	200	225	250	250	300	350	450	500	600	800
<b>Height (H)</b>	mm	235	235	255	265	265	325	352	470	495	640	750
<b>Opening flow</b>	m <sup>3</sup> /h	0,2	0,3	0,3	0,4	0,4	1,4	1,6	3	9	16	20

\* On request PN10-PN25



Factory and sales management :  
 Str. Antica Fornace, 2/4 – 14053 CANELLI (AT) ITALY  
 Tel. +39.0141.822106/832151 Fax +39.0141.832198 /832191  
 E-mail: info@wtmeters.it - Website: www.wtmeters.it

Sales office :  
 Via del Gomito, 23 – 40127 BOLOGNA ITALY  
 Tel. +39.051.326854 Fax +39.051.328085  
 E-mail: info@wtmeters.it - Website: www.wtmeters.it